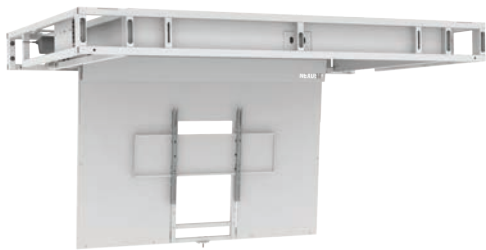




MODEL CL-65+

FLIP-DOWN TV LIFT

For Up to 65" TV



Lift Tilts _____	95° Downwards
TV Maximum Screen Size _____	65"
TV Maximum Height _____	36" [91.4 cm]
TV Maximum Width _____	61" [154.9 cm]
TV Maximum Depth _____	4.25" [10.8 cm]
Maximum Weight _____	100 lbs [45 kg]

Everything you love about Model CL-65, and more. Our original flip-down TV lift has evolved, and now allows for installation in the ceiling framing or bolted directly onto the ceiling surface; CL-65+ also features improved cable management, easier installation of the attached ceiling panel, an optional motorized latch for locking in the stored position, and an even cleaner aesthetic. It requires just 7-5/8" of vertical space for in-ceiling installations, and accommodates up to 65" TVs.

Near Silent Operation / Easy to Install / Ships Fully Assembled



All Nexus products are shipped in custom-made protective packaging, and they include everything you need to mount and operate them. The products are designed for easy assembly, and simple instructions with photos are included.

MODEL CL-65+

TECHNICAL SPECIFICATIONS

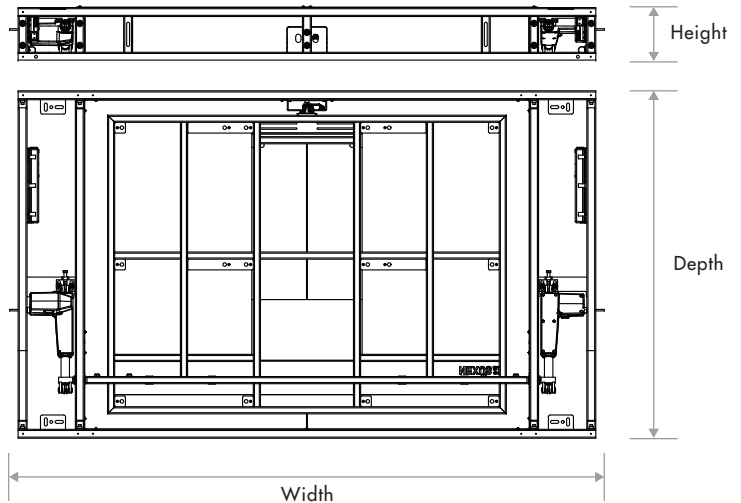
- 100 lbs [45.4 kg] total lift capacity
- TV maximum screen size: 65"
- Tilts 95° downward
- No exposed tracks, gears or scissors
- UL recognized components
- Draws 3-1/2 Amps @ 110V and 1-3/4 Amps @ 220V at max thrust
- 17 seconds to fully open
- Quiet - runs at just 48 dB
- Screw-driven mechanism
- Aluminum construction
- Choice of RF remote, Control System Integration Kit (includes IR remote and contact closure interface), or IP control device
- "Soft Start" and "Soft Stop" for smooth ride
- Power is available in these formats: USA, 110V / Europe, 230V / Japan, 100V / Australia, 240V / UK, 230V
- Can be surface mounted (hardware not provided)

WHAT'S PROVIDED

- Ready to install, assembled CL-65+ lift system
- Control box with power cord
- Remote control and receiver (your choice of RF, CSI Kit*, or IP control device)
- Backup control switch
- Installation hardware
- Screen locking hardware
- Allen wrenches for screen locks and adjustability system
- Installation instructions with photos



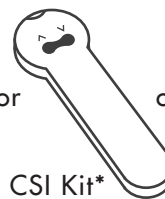
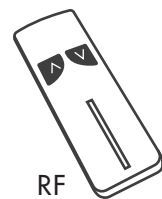
****Lift must be mounted on a level ceiling. It is not compatible with angled or pitched ceilings.**



Height: 7-5/8" [19.5 cm]
Width: 80-3/4" [205.1 cm]
Depth: 48-5/8" [123.5 cm]

CONTROL OPTIONS

Choice of RF remote, CSI Kit*, or IP control device. Wired button pad included with all.



or
IP
CONTROL
DEVICE



*CSI Kit (Control System Integration) includes IR remote and contact closure interface

INSTALLATION TIPS

Tip #1: Calculate the weight of the flip-down panel that will attach to the lift before installation so you know you are within the weight limit

Tip #2: Bevel the rear edge of the flip-down panel at 45° to achieve a 1/8" reveal

Tip #3: Use the adjustment screws to fine tune the flip-down panel so it is flush with the surrounding ceiling

MOUNTING FOR FLIP-DOWN PANEL

Match any ceiling material to seamlessly hide the lift within the ceiling (weight limit applies).

Use appropriate fasteners for attaching the flip-down panel material (see installation manual).